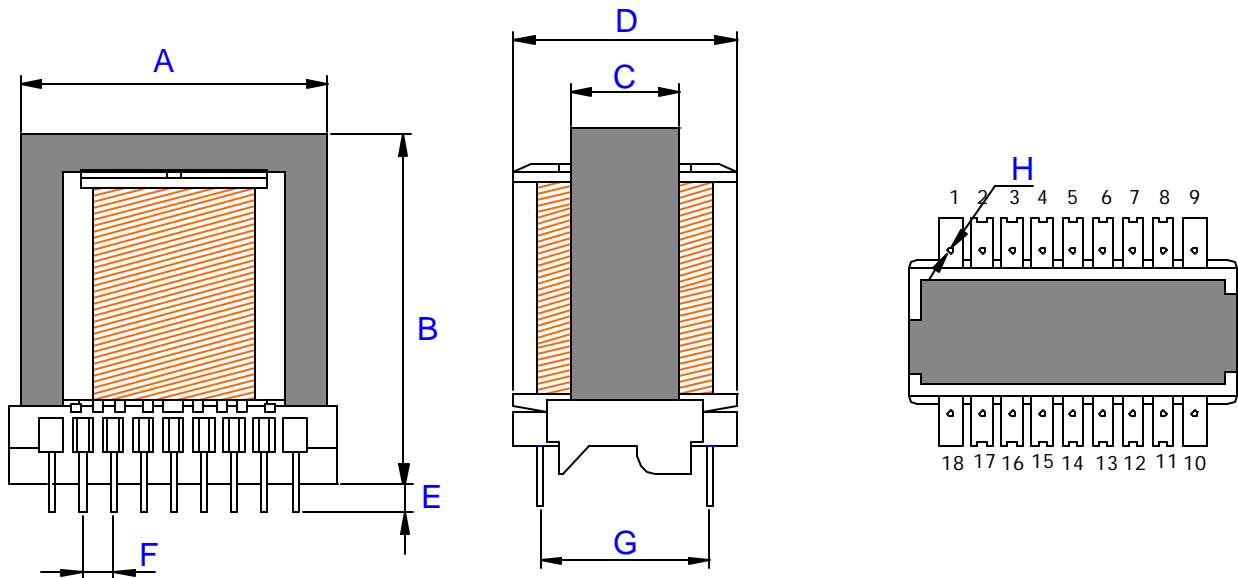




**ER 49 - 18 pinos**



*TOLERÂNCIA: +/- 0,5mm.*

*AL: 5000nH +/-25%*

*ÁREA ÚTIL DA JANELA: 143,2mm<sup>2</sup>*

CARRETEL	A	B	C	D	E	F	G	H
ER 49 - 18 pinos	53,3	57,7	17,2	37,2	4,5	5,0	28,0	1,0